

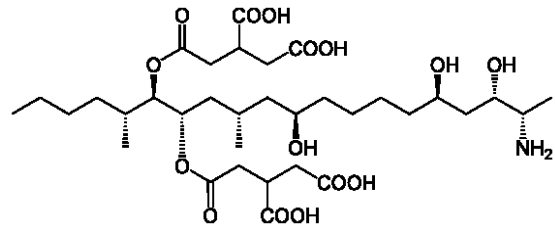
ImmunoAffinity Column for Fumonisin

for sample preparation

Order no.: IC-CF-05-25
Lot: xxx xxx xxx xxx



aokinImmunoClean CF FUM column



Fumonisin B1 (FUM)

Specification:

Recommended loading: < 500 ng FUM
Loading rate: 1-2 ml/min
Elution rate: < 1 ml/min

	Recovery of 100 ng	Recovery of 500 ng
Specification:	<input checked="" type="checkbox"/> Recovery > 80%	<input checked="" type="checkbox"/> Recovery > 80%

Methodology Testing:

Sample loading:	FUM standard	0 ng, 100 ng, 500 ng Fumonisin Mix (Fumonisin B1 and Fumonisin B2)
	Fluid	10 mM PBS/10% Methanol/0.05% Sodium azide, pH 7.2
	Volume	10 ml
	Rate	1 ml / min
Column washing:	Fluid	10 mM PBS/ 0.05% Sodium azide, pH 7.2
	Volume	10 ml
	Rate	> 1 ml /min
Elution:	Eluant	100% Methanol / 2% Glacial acid
	Volume	1.5 ml
	Incubation	2 min
	Rate	1 ml / min
Analysis:	by FPIA	



Dipl.-Ing. Biotechnology
Nicole Abdallah
Head of Quality Control