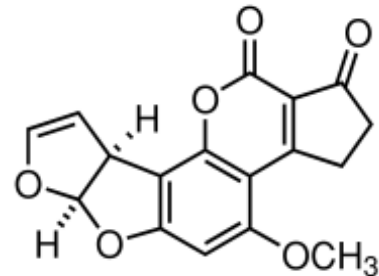


## ImmunoAffinity Column for Aflatoxin total for sample preparation

**Order no.:** IC-C-03-25  
**Lot:** xxx xxx xxx xxx



aokinImmunoClean C AFLA column



Aflatoxin (AFLA)

### **Specification:**

Recommended loading: < 200 ng AFLA total  
Loading rate: ~ 1 ml/min  
Elution rate: < 1 ml/min

	Recovery of 150 ng
Specification:	<input checked="" type="checkbox"/> Recovery > 80%

### **Methodology Testing:**

**Sample loading:** AFLA standard 0 ng, 150 ng Aflatoxin B1  
Fluid 10 % Methanol, phosphate buffer, pH 7.4  
Volume 10 ml  
Rate ~ 1 ml / min

**Column washing:** Fluid 10 % Methanol, phosphate buffer, pH 7.4  
Volume 5 ml  
Rate > 1 ml / min

**Elution:** Eluant 100% Methanol  
Volume 2-3 ml  
Incubation 2 min  
Rate ~ 1 ml / min

**Analysis:** by FPIA



Dipl.-Ing. Biotechnology  
Nicole Abdallah  
Head of Quality Control