

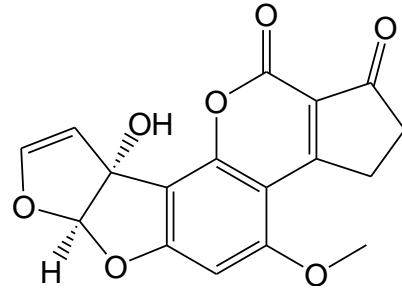
# aokinImmunoClean C+ **AFLA M1**

## ImmunoAffinity Column for Aflatoxin M1 for sample preparation

Order no.: IC-C+-31-25  
Lot: xxx xxx xxx xxx



aokinImmunoClean C+ **AFLA M1** column



Aflatoxin M1 (AFLA M1)

### **Specification:**

Recommended loading: < 50 ng AFLA M1  
Loading rate: ~ 1 ml/min  
Elution rate: < 1 ml/min

	Recovery of 50 ng
Specification:	<input checked="" type="checkbox"/> Recovery > 80%

### **Methodology Testing:**

**Sample loading:** AFLA standard 0 ng, 50 ng Aflatoxin M1-Standard  
Fluid 10% Methanol, 90% 10mM PBS  
Volume 10 ml  
Rate 1 ml / min

**Column washing:** Fluid 10% Methanol, 90% 10mM PBS  
Volume 5 ml  
Rate > 1 ml / min

**Elution:** Eluant 100% Methanol  
Volume 2 ml  
Rate 1 ml / min  
Incubation 2 min

**Analysis:** by FPIA



Dipl.-Ing. Biotechnology  
Nicole Abdallah  
Head of Quality Control