

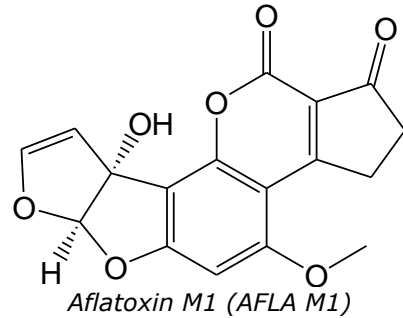
aokinImmunoClean CF **AFLA M1**

ImmunoAffinity Column for Aflatoxin M1
for sample preparation

Order no.: IC-CF-31-05
Lot: xxx xxx xxx xxx



aokinImmunoClean CF **AFLA M1** column



Specification:

Recommended loading: < 150 ng AFLA M1
Loading rate: 0,5 - 1 ml/min
Elution rate: < 1 ml/min

| | Recovery of 1 ng | Recovery of 5 ng | Recovery of 10 ng |
|----------------|--|--|--|
| Specification: | <input checked="" type="checkbox"/> Recovery > 80% | <input checked="" type="checkbox"/> Recovery > 80% | <input checked="" type="checkbox"/> Recovery > 80% |

Methodology Testing:

Sample loading: AFLA M1 0 ng, 1 ng, 5 ng, 10 ng Aflatoxin M1
Fluid 50mM PBS
Volume 50 ml
Rate 1 ml / min

Column washing: Fluid 50mM PBS
Volume 5 ml
Rate > 1 ml /min

Elution: Eluant 100 % Methanol
Volume 1.5 ml
Incubation 2 min
Rate 1 ml / min

Analysis: by FPIA



Dipl.-Ing. Biotechnology
Nicole Abdallah
Head of Quality Control