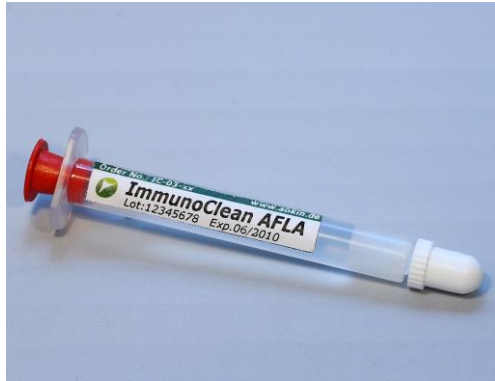
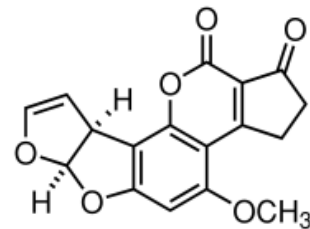


## ImmunoAffinity Column for Aflatoxin total for sample preparation

Order no.: IC-CF-03-25  
Lot: xxx xxx xxx xxx



aokinImmunoClean CF AFLA column



Aflatoxin (AFLA)

### **Specification:**

Recommended loading: < 150 ng AFLA total  
Loading rate: 0,5 - 1 ml/min  
Elution rate: < 1 ml/min

	Recovery of 10 ng	Recovery of 150 ng
Specification:	<input checked="" type="checkbox"/> Recovery > 80%	<input checked="" type="checkbox"/> Recovery > 80%

### **Methodology Testing:**

**Sample loading:** AFLA 0 ng, 10 ng, 150 ng Aflatoxin Mix (B1, B2, G1, G2)  
Fluid 10% Methanol, 50 mM PBS pH= 7.2, 0.05% Sodiumazide  
Volume 10 ml  
Rate 1 ml / min

**Column washing:** Fluid 10% Methanol, 50 mM PBS pH= 7.2, 0.05% Sodiumazide  
Volume 10 ml  
Rate > 1 ml /min

**Elution:** Eluant 100 % Methanol  
Volume 1.5 ml  
Incubation 2 min  
Rate 1 ml / min

**Analysis:** by FPIA



Dipl.-Ing. Biotechnology  
Nicole Abdallah  
Head of Quality Control