

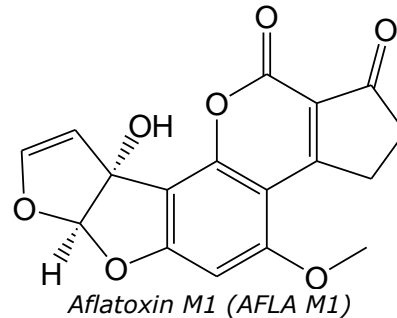
aokinImmunoClean C **AFLA M1**

ImmunoAffinity Column for Aflatoxin M1
for sample preparation

Order no.: IC-C-31-25
Lot: xxx xxx xxx xxx



aokinImmunoClean C **AFLA M1** column



Specification:

Recommended loading: < 200ng AFLA M1
Loading rate: 1-2 ml/min
Elution rate: < 1 ml/min

	Recovery of 150 ng
Specification:	<input checked="" type="checkbox"/> Recovery > 80%

Methodology Testing:

Sample loading: AFLA M1 0 ng, 150 ng Aflatoxin M1
Fluid 10 % Methanol, phosphate buffer, pH 7.4
Volume 10 ml
Rate 1 ml / min

Column washing: Fluid 10 % Methanol, phosphate buffer, pH 7.4
Volume at least 5 ml
Rate > 1 ml / min

Elution: Eluant 100 % Methanol
Volume 2 – 3 ml
Incubation 2 min
Rate ~ 1 ml / min

Analysis: by FPIA



Dipl.-Ing. Biotechnology
Nicole Abdallah
Head of Quality Control