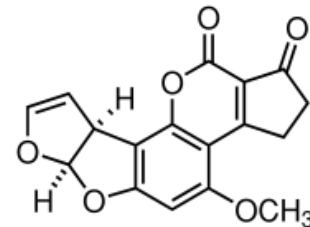


## ImmunoAffinity Column for Aflatoxin total for sample preparation

**Order no.: IC-C+-03-25**  
Lot: xxx xxx xxx xxx



aokinImmunoClean C+ AFLA column



Aflatoxin (AFLA)

### **Specification:**

Recommended loading: < 150 ng AFLA total  
Loading rate: < 3 ml/min  
Elution rate: < 1 ml/min

|                | Recovery of 150 ng                                 |
|----------------|--|
| Specification: | <input checked="" type="checkbox"/> Recovery > 80% |

### **Methodology Testing:**

**Sample loading:** AFLA standard 0 ng, 150 ng B1  
Fluid 10% Methanol, 90% 10mM PBS  
Volume 10 ml  
Rate ~1 ml / min

**Column washing:** Fluid 10% Methanol, 90% 10mM PBS  
Volume 5 ml  
Rate > 1 ml / min

**Elution:** Eluant 100% Methanol  
Volume 1.5 ml  
Rate 1 ml / min  
Incubation 2 min

**Analysis:** by FPIA



Dipl.-Ing. Biotechnology  
Nicole Abdallah  
Head of Quality Control