



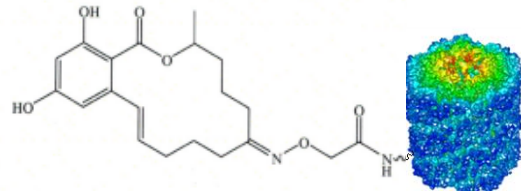
Conjugate ZON-KLH

Zearalenone, conjugate of Zearalenone-carboxymethyloxime with Keyhole Limpet Hemocyanine

Order-No: CJ-01-KLH

Lot: xxx xxx xxx xxx

Structure:



Conjugate of Zearalenone-carboxymethyloxime with Keyhole Limpet Hemocyanine

Specification:

- Synthesis number: xxx xxx xxx
- Protein: Keyhole Limpet Hemocyanine
- Label: Zearalenone-carboxymethyloxime
- Molar Excess of NHS ester during coupling: 1.200 fold
- Concentration of protein: $c_m \approx 1.0$ mg/ml
- Amount of Conjugate: $m \approx 0.5$ mg
- Volume: $V = 500$ μ l
- Buffer: PBS pH 7.4 / 0.9 M NaCl, without preservatives
- Quality Controller: D.C.
- Storage: 4° C, protect from light!
- Expiry date: 1 year after delivery
- Reference: This product does not contain BSA.

Hint: If the final concentration of purified protein conjugate is less than 1 mg/ml, we recommend to add bovine serum albumin (BSA) or other stabilizing proteins at 1^{-10} mg/ml. In the presence of 0.02% thimerosal or 2 mM sodium azide, the conjugate should be stable at 4 °C for several months. For longer storage, divide the conjugate into small aliquots and freeze at -20 °C. **Avoid repeated freezing and thawing!**

Caution

Substance not yet fully tested (EU).
Not for drug, household or other uses.

Aokin AG – 13125 Berlin
Tel: +49 (0) 3094892160