

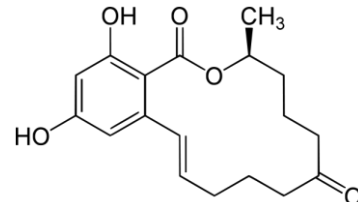
## ImmunoAffinity Column for Zearalenone for sample preparation

Order no.: IC-C-01-25

Lot: xxx xxx xxx xxx



aokinImmunoClean C ZON column



Zearalenone (ZON)

### Specification:

Recommended loading < 500 ng ZON  
Loading rate: ≤ 1 ml/min  
Elution rate: < 1 ml/min

	Recovery of 50 ng	Recovery of 300 ng
Specification:	<input checked="" type="checkbox"/> Recovery > 80%	<input checked="" type="checkbox"/> Recovery > 80%

### Methodology Testing:

**Sample loading:** ZON standard  
Fluid 10% Methanol / 90% 10mM Phosphatbuffer (1:10)  
Volume 10 ml  
Rate 1 ml / min

**Column washing:** Fluid 10% Methanol / 90% 10mM Phosphatbuffer (1:10)  
Volume 5 ml  
Rate > 1 ml / min

**Elution:** Eluant 100% Methanol  
Volume 2 ml  
Rate ~ 1 ml / min  
Incubation 2 min

**Analysis:** by FPIA



Dipl.-Ing. Biotechnology  
Nicole Abdallah  
Head of Quality Control