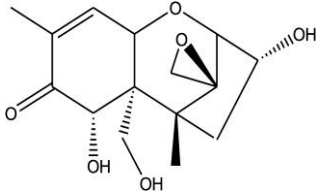


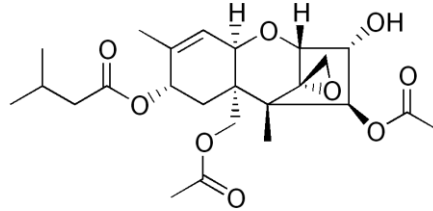
DON T2/HT2

Order No.: RMM-278-1963r

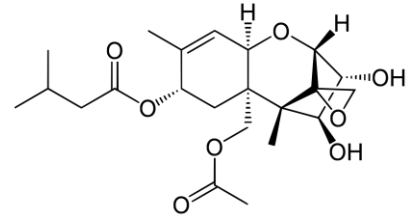
for analysis of Deoxynivalenol (DON)
and T2- and HT2-Toxin (T2/HT2) in wheat



Deoxynivalenol (DON)



T2-Toxin (T2)



HT2-Toxin (HT2)

Specification

Lot No.	2781963210215275
Matrix Type	Wheat
Analyte	Deoxynivalenol (DON), T2- and HT2-Toxin (T2/HT2)
Weight/Volume	50 g
Storage	-18 °C
Expiry date	06/2024

Concentration	Value	Data points	Expanded uncertainty with 95 % confidence
Deoxynivalenol	582 µg/kg	13	71
T2-Toxin	present	7	nd
HT2-Toxin	135,2 µg/kg	9	23,86
T2/HT2-Toxin total	155,2 µg/kg	9	14,62

Comments

aokin reference matrix material is naturally contaminated and homogenized by cross-riffling. Concentration of the analyte is determinate in a proficiency round. Unweighted mean value of the means of accepted sets of data, each set being obtained in a different laboratory and/or with a different method of determination such as HPLC-MS/MS, HPLC/FLD, HPLC/MS, LC-MS/MS). The certified value and its uncertainty are traceable to the International System of Units (SI) as chemical mass fraction as µg/kg. The minimum amount of sample to be used is 2 g.