

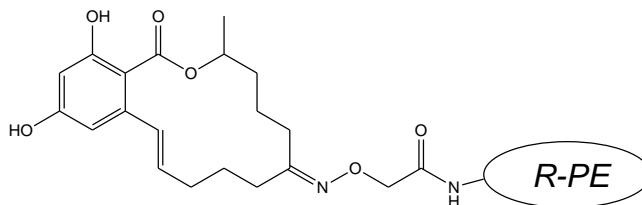


Conjugate ZON-RPE

Order-No: CJ-01-RPE

Lot: 001XXXXXXXXXX318

Structure:



Conjugate of Zearalenone with R-Phycoerythrin (R-PE)

Specification:

- Synthesis number: XXX XX XXX
 - Protein: R-Phycoerythrin (R-PE)
 - Label: Zearalenone
 - Molar Excess of NHS ester during coupling: 100fold
 - Concentration of protein: $c_m \approx 1.0$ mg/ml
 - Volume: 500 μ l
 - Amount of Conjugate: $m \approx 150$ μ g
 - Buffer: PBS pH 7.4 with 0.09% sodium azide
 - Storage: 4° C, protect from light!
 - Reference: This product does not contain BSA.
 - Hint: If the final concentration of purified protein conjugate is less than 1 mg/ml, we recommend to add bovine serum albumin (BSA) or other stabilizing proteins at 1^{-10} mg/ml.
 - Expiry date: In the presence of 0.02% thimerosal or 2 mM sodium azide, the conjugate should be stable at 4 °C for several months.
- For longer storage, divide the conjugate into small aliquots and freeze at -20 °C. **Avoid repeated freezing and thawing!**

Caution

Substance not yet fully tested (EU).
For laboratory use only. Not for drug, household or other use.

Aokin AG – 13125 Berlin
Tel: +49 (0) 3094892160