



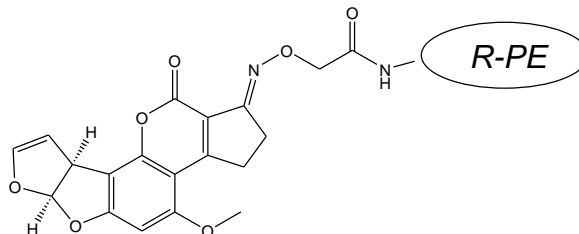
Conjugate AFLA B1-RPE

Conjugate of Aflatoxin B1-carboxymethyloxime with R-Phycoerythrin (R-PE)

Order-No: CJ-03-RPE

Lot: 004K2XXXXXX318

Structure:



Conjugate of Aflatoxin B1-carboxymethyloxime with R-Phycoerythrin (R-PE)

Specification:

- Synthesis number: AFLA-RPE-K2
- Protein: R-Phycoerythrin (R-PE)
- Label: Aflatoxin B1-carboxymethyloxime
- Molar Excess of NHS ester during coupling: 250fold
- Concentration of protein: $c_m \approx 1.0$ mg/ml
- Volume: $m \approx 0.5$ mg
- Amount of Conjugate: $V = 500$ μ l
- Buffer: PBS pH 7.4 with 0.09% sodium azide
- Quality Controller: D.C.
- Storage: 4° C, protect from light!
- Reference: This product does not contain BSA.
- Hint: If the final concentration of purified protein conjugate is less than 1 mg/ml, we recommend to add bovine serum albumin (BSA) or other stabilizing proteins at 1⁻¹⁰ mg/ml.
- Expiry date: In the presence of 0.02% thimerosal or 2 mM sodium azide, the conjugate should be stable at 4 °C for several months.

For longer storage, divide the conjugate into small aliquots and freeze at -20 °C. **Avoid repeated freezing and thawing!**

Caution

Substance not yet fully tested (EU).
For laboratory use only. Not for drug, household or other use.

Aokin AG - 13125 Berlin
Tel: +49 (0) 3094892160