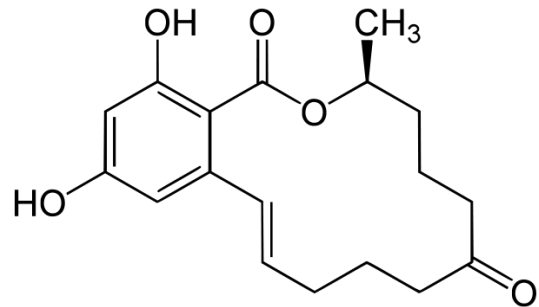


## ImmunoAffinity Column for Zearalenone for sample preparation

Order no.: IC-C-01-25  
Expiry Date: XX/XXXX  
Lot: 001XXXXXXXXXX071



Zearalenone (ZON)

### **Specification:**

Recommended loading < 500 ng ZON  
Loading rate: ≤ 1 ml/min  
Elution rate: < 1 ml/min

	Recovery of 300 ng
Test results:	ZON ~100% (n=2)
Specification:	<input checked="" type="checkbox"/> Recovery > 80%

### **Methodology Testing:**

**Sample loading:** ZON standard 300 ng  
Fluid 10 % Methanol / 90 % 10 mM Phosphatbuffer (1:10)  
Volume 10 ml  
Rate ~ 1 ml / min

**Column washing:** Fluid 10 % Methanol / 90 % 10 mM Phosphatbuffer (1:10)  
Volume 5 ml  
Rate > 1 ml / min

**Elution:** Eluant 100 % Methanol  
Volume 2 ml  
Rate ~ 1 ml / min  
Incubation 3 min

**Analysis:** by FPIA

#### **Manual**

[aokinImmunoClean  
columns for the  
quantification of  
Zearalenone](#)