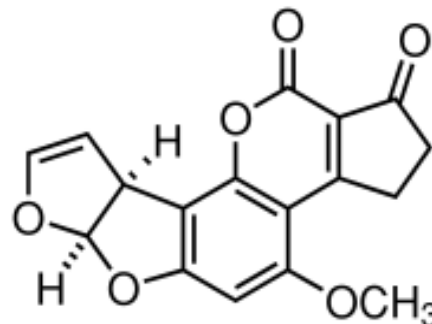


**ImmunoAffinity Column for Aflatoxin total**  
for sample preparation

**Order no.: IC-C-03-25**  
Expiry date: XX/XXXX  
Lot: 003XXXXXXXXXX071



Aflatoxin (AFLA)

**Specification:**

Recommended loading: < 200 ng AFLA total  
Loading rate: ~ 1 ml/min  
Elution rate: < 1 ml/min

|                | Recovery of 200 ng                                 |
|----------------|--|
| Test results:  | B1 ~100% (n=2)                                     |
| Specification: | <input checked="" type="checkbox"/> Recovery > 80% |

**Methodology Testing:**

**Sample loading:** AFLA standard 200 ng Aflatoxin B1  
Fluid 10 % Methanol / 90 % 10 mM Phosphatbuffer (1:10)  
Volume 10 ml  
Rate ~ 1 ml / min

**Column washing:** Fluid 10 % Methanol / 90 % 10 mM Phosphatbuffer (1:10)  
Volume 5 ml  
Rate > 1 ml / min

**Elution:** Eluant 100 % Methanol  
Volume 2-3 ml  
Rate ~ 1 ml / min  
Incubation 3 min

**Analysis:** by FPIA

**Manual**

[aokinImmunoClean columns for the quantification of Aflatoxin total](#)