



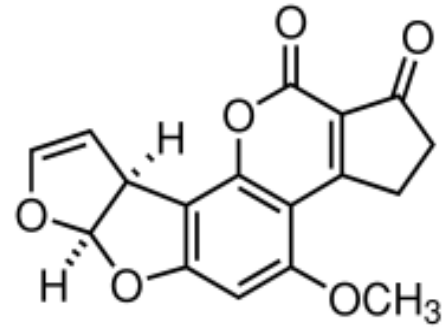
## ImmunoAffinity Column for Aflatoxin and Ochratoxin A

for sample preparation

**Order no.:** IC-C-0304-25

**Expiry date:** XX/XXXX

**Lot:** 034XXXXXXXXXX071



Aflatoxin (AFLA)

### **Specification:**

Recommended loading: < 200 ng AFLA total  
 Loading rate: ~ 1 ml/min  
 Elution rate: < 1 ml/min

	<b>Recovery of 200 ng</b>
Test results:	AFLA B1 ~100% (n=2)
Specification:	<input checked="" type="checkbox"/> Recovery > 80%

### **Methodology Testing:**

**Sample loading:** AFLA standard 200 ng Aflatoxin B1  
 Fluid 10 % Methanol / 90 % 10 mM Phosphatbuffer (1:10)  
 Volume 10 ml  
 Rate ~ 1 ml / min

**Column washing:** Fluid 10 % Methanol / 90 % 10 mM Phosphatbuffer (1:10)  
 Volume 5 ml  
 Rate > 1 ml / min

**Elution:** Eluant 100 % Methanol  
 Volume 2-3 ml  
 Rate ~ 1 ml / min  
 Incubation 3 min

**Analysis:** by FPIA

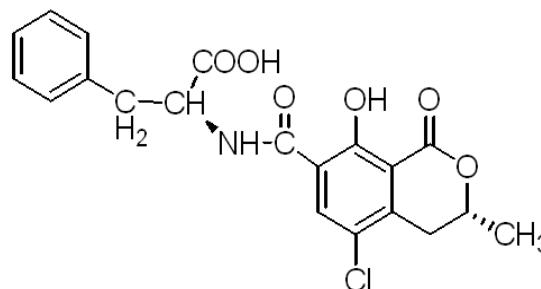
### **Manual**

[aokinImmunoClean columns for the quantification of Aflatoxin and Ochratoxin](#)



**ImmunoAffinity Column for Aflatoxin and Ochratoxin A**  
for sample preparation

**Order no.:** IC-C-0304-25  
**Expiry date:** XX/XXXX  
**Lot:** 034XXXXXXXXXX071



Ochratoxin A (OTA)

**Specification:**

Recommended loading: < 200 ng OTA  
≤ 1 ml/min  
Loading rate: < 1 ml/min

	Recovery of 200 ng
Test results:	OTA > 95.6 ± 0.8% (n=2)
Specification:	<input checked="" type="checkbox"/> Recovery > 80%

**Methodology Testing:**

**Sample loading:** OTA standard 200 ng Ochratoxin A (OTA)  
Fluid 10 % Methanol / 90 % 10 mM Phosphatbuffer (1:10)  
Volume 10 ml  
Rate ~ 1 ml / min

**Column washing:** Fluid 10 % Methanol / 90 % 10 mM Phosphatbuffer (1:10)  
Volume 5 ml  
Rate > 1 ml / min

**Elution:** Eluant 0,004 % Glacial Acetic Acid / Methanol  
Volume 4 ml  
Incubation ~ 1 ml / min  
Rate 3 min

**Analysis:** by FPIA

**Manual**  
[aokinImmunoClean columns for the quantification of Aflatoxin and Ochratoxin](#)