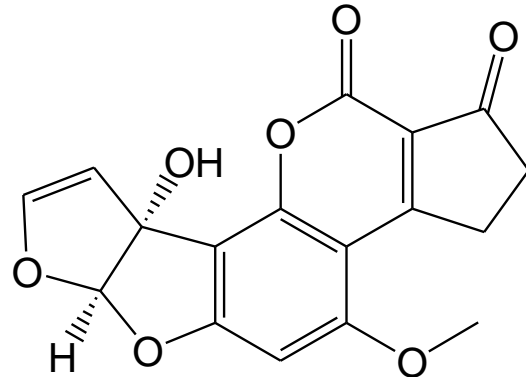


ImmunoAffinity Column for Aflatoxin M1
for sample preparation

Order no.: IC-C-31-25
Expiry date: XX/XXXX
Lot: 031XXXXXXXXXX071



Aflatoxin M1 (AFLA M1)

Specification:

Recommended loading: < 50 ng AFLA M1
Loading rate: ≤ 1 ml/min
Elution rate: < 1 ml/min

	Recovery of 50 ng
Test results:	AFLA M1 ~100% (n=2)
Specification:	<input checked="" type="checkbox"/> Recovery > 80%

Methodology Testing:

Sample loading: AFLA M1 standard 50 ng
Fluid 10 % Methanol / 90 % 10 mM Phosphatbuffer (1:10)
Volume 6 ml
Rate 1 ml / min

Column washing: Fluid 10 % Methanol / 90 % 10 mM Phosphatbuffer (1:10)
Volume 5 ml
Rate > 1 ml / min

Elution: Eluant 100 % Methanol
Volume 2 – 3 ml
Rate ~ 1 ml / min
Incubation 3 min

Analysis: by FPIA

Manual
[aokinImmunoClean columns for the quantification of Aflatoxin M1](#)