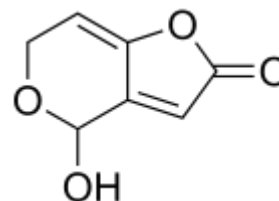


# ***aokin**QuickClean Patulin*

## **Analyte:**

Patulin



## **Background:**

**aokinQuickCleanPatulin** columns allow a rapid and easy clean up of pomaceous fruit samples. **aokinQuickCleanPatulin** columns minimize matrix effects and are used prior to determining Patulin. They can be utilized in combination with all common analytical methods such as GC-MS and HPLC.

## **Process:**

- 1) Extraction of 25 g samples (apples, pears) with 100 mL Acetonitrile
- 2) Add 500 µl onto spin column and centrifuge for 2 minutes at 5000 g.  
Optional step: use eluate of first spin column and pipette onto new column, centrifuge again
- 3) Purified extract can be used directly for the analytical step

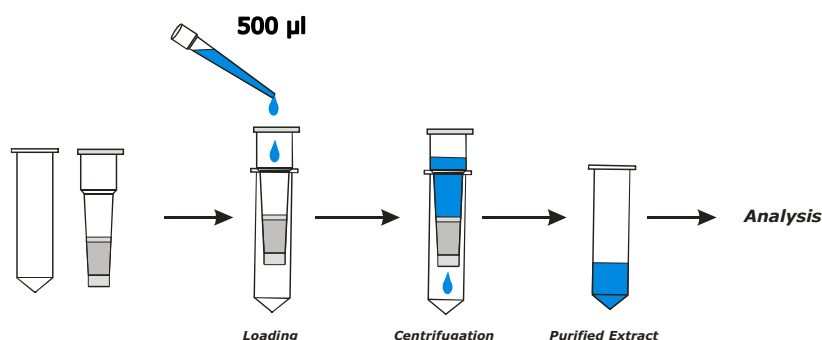


Fig. 1 Purification and concentration of Patulin extracts using the **aokinQuickClean** spin column.

## **Extraction solvent:**

Acetonitrile

## **Recommended Procedure:**

Volume for loading the spin column	500 µL extract
g-force (centrifuge)	5000 x g, 2 min
recovery rate Patulin	> 90 %