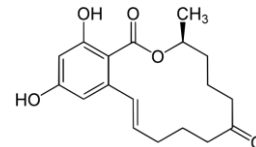


## **Analyte:**

Zearalenone (ZON) and metabolites



## **Background:**

**aokinQuickCleanZON** columns allow a rapid and easy clean up of raw samples. **aokinQuickCleanZON** columns minimize matrix effects and are used prior to determining Zearalenone (ZON) and its metabolites. They can be utilized in combination with all common analytical methods such as ELISA, DC, HPLC, GCMS, Fluorescence Polarization (as **aokinmycontrol**), Lateral Flow, rapid kinetic assay.

## **Process:**

- 1) Extraction of samples
- 2) Optional Filtration
- 3) Add 500 µl onto spin column and centrifuge for 3 minutes at 3000 g.  
Optional step: use eluate of first spin column and pipette onto new column, centrifuge again
- 4) Purified extract can be used directly for the analytical step or further diluted before analysis.

Note: For some methods a dilution step may be required, if precipitation is present than centrifuge with max. g-force and use supernatant for analysis.

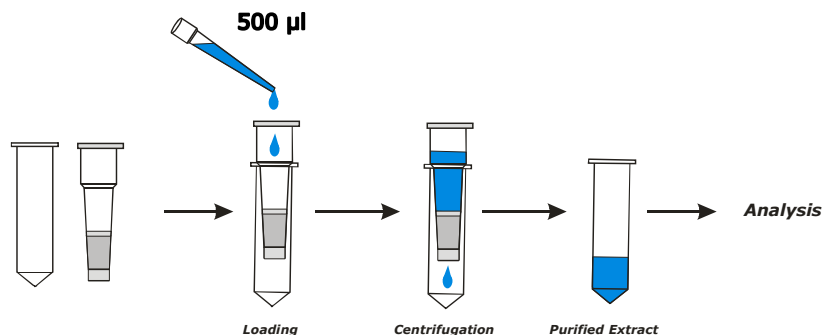


Fig. 1 Purification and concentration of mycotoxin extracts using the **aokinQuickClean** spin column.

## **Extraction solvent:**

Mixtures of buffer/methanol 70/30 or other mixtures of alcohol, water, acetonitrile and additives

**aokinExtractionSolventZON** (Order-No.: QCES-01-1000) recommended.

## **Recommended Procedure:**

Volume for loading the spin column  
g-force (centrifuge)  
recovery rate ZON

500 - 800 µL extract  
6000 x g, 2 min  
> 93 % (for wheat, corn, feed)