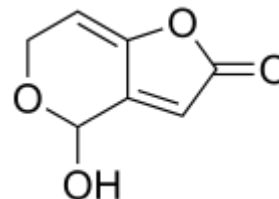


aokinQuickClean Patulin

Analyte:

Patulin



Background:

aokinQuickCleanPatulin columns allow a rapid and easy clean up of pomaceous fruit samples. aokinQuickCleanPatulin columns minimize matrix effects and are used prior to determining Patulin. They can be utilized in combination with all common analytical methods such as GC-MS and HPLC.

Process:

- 1) Extraction of 25 g samples (apples, pears) with 100 mL Acetonitrile
- 2) Add 500 μ l onto spin column and centrifuge for 2 minutes at 5000 g.
Optional step: use eluate of first spin column and pipette onto new column, centrifuge again
- 3) Purified extract can be used directly for the analytical step

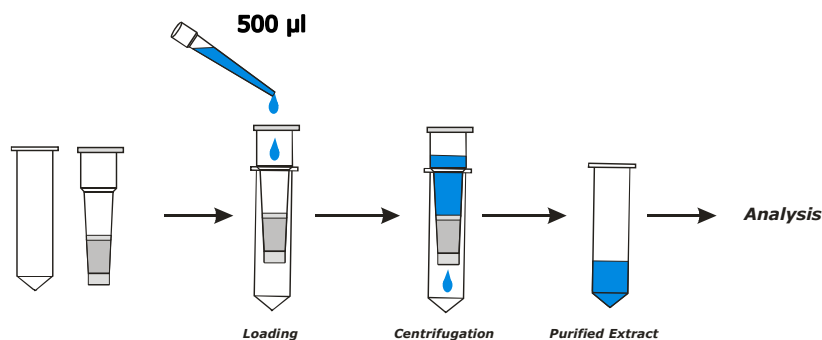


Fig. 1 Purification and concentration of Patulin extracts using the aokinQuickClean spin column.

Extraction solvent:

Acetonitrile

Recommended Procedure:

Volume for loading the spin column
g-force (centrifuge)
recovery rate Patulin

500 μ L extract
5000 x g, 2 min
> 90 %