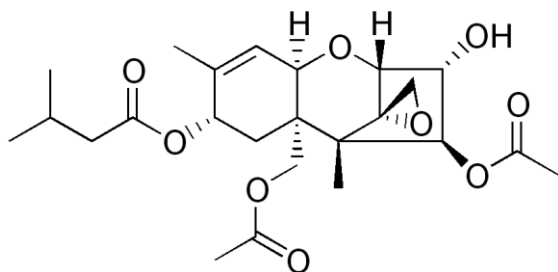
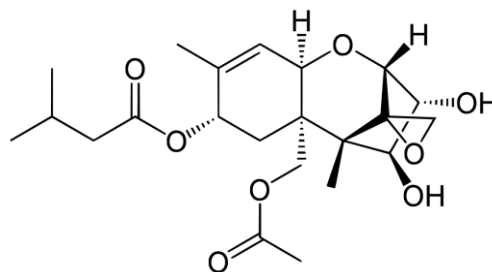


## QuickClean T2/HT2

spin columns for sample preparation



T2-Toxin (T2)



HT2-Toxin (HT2)

---

## Background

**aokinQuickCleanT2/HT2** columns allow a rapid and easy clean up of raw samples. The columns minimize matrix effects and are used prior to determining T2-toxin (T2) and its metabolites. They can be utilized in combination with all common analytical methods such as ELISA, DC, HPLC, GCMS, Fluorescence Polarization (as **aokinmycontrol**), Lateral Flow, Rapid kinetic assay.

---

## Process

1. Extraction of samples
2. Filtration and dilution to 40 % solvent, if precipitation occurs centrifuge at high g-factor
3. Add 500 - 900 µl sample onto spin column and centrifuge for 3 minutes at 5000 g.  
Optional step: use eluate of first spin column and pipette onto new column, centrifuge again
4. Purified extract can be used directly for the analytical step

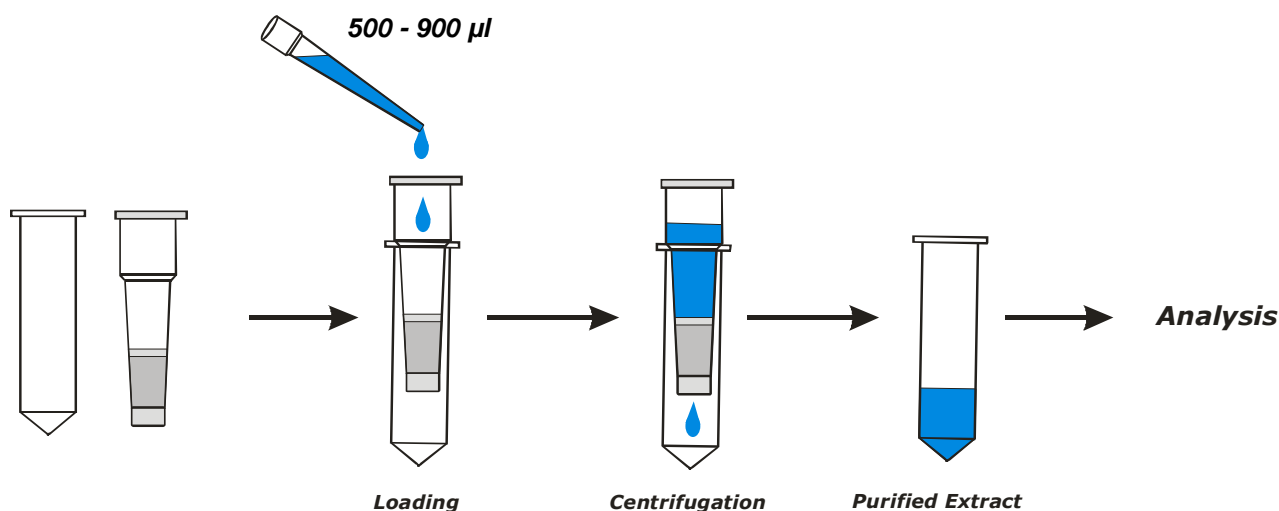


Fig. 1 Purification and concentration of mycotoxin extracts using the **aokin QuickClean** spin column.

---

## Extraction solvent

Any mixtures of alcohol, water, acetonitrile and additives, **aokin Extraction Solvent T2/HT2** (Order-No.: QCES-01-2500) recommended, or alternatively 20% H<sub>2</sub>O/ 80% Acetonitrile.

---

## Recommended procedure

Volume for loading the spin column	500 - 900 µL extract
g-force (centrifuge)	5000 g, 3 min
recovery rate for T2/HT2-toxin (T2/HT2)	> 90 % (for wheat, corn, oats)

---