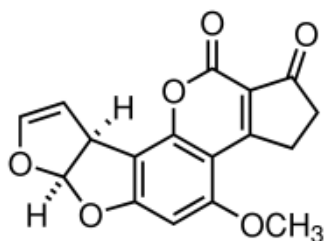


AFLA

for analysis of Aflatoxin total (AFLA) in Paprika



Aflatoxin B1 (AFLA)

Specification

Lot No. 0031462220114275

Matrix Type Paprika

Analyte Aflatoxin total (AFLA)

Weight/Volume 50 g

Storage -18 °C

Retest 02/2026

| | Concentration x_{PT} [$\mu\text{g}/\text{kg}$] | data points n | satisfactory range $x_{PT} \pm 2 \sigma_{PT}$ [$\mu\text{g}/\text{kg}$] | uncertainty* $2 u(x_{PT})$ [$\mu\text{g}/\text{kg}$] |
|-----------------|---|------------------|--|---|
| Aflatoxin B1 | 17,42 | 10 | 7,16 - 27,68 | 3,10 |
| Aflatoxin B2 | 2,36 | 10 | 1,32 - 3,40 | 0,50 |
| Aflatoxin G1 | 8,45 | 10 | 4,73 - 12,17 | 0,56 |
| Aflatoxin G2 | 1,56 | 9 | 0,87 - 2,25 | 0,14 |
| Aflatoxin total | 30,02 | 9 | 13,74 - 46,30 | 5,88 |

*Expanded uncertainty with $k=2$ for approximately 95% level of confidence (PA/PH/OMCL(18)153R1 CORR Evaluation of Measurement Uncertainty - Annex 2.5).

Comments

aokin reference matrix material is naturally contaminated and homogenized. Concentration of the analyte is determinate in a proficiency round. Unweighted mean value of the means of accepted sets of data, each set being obtained in a different laboratory and/or with a different method of determination such as HPLC/FLD, HPLC/UV.

The certified value and its uncertainty are traceable to the International System of Units (SI) as chemical mass fraction as $\mu\text{g}/\text{kg}$. The assigned value, the satisfactory range and the expanded uncertainty are given.

The minimum amount of sample to be used is 10 g.

Calculation of the assigned value x_{PT}

The Assigned Value is the value attributed to a particular property of interlaboratory proficiency test (definition from ISO13528:2016). x_{PT} is derived from participants quantitative results obtained with confirmatory analysis. The procedure for determining is from the Algorithm A (ISO 13528:2016) or from the median.

The standard uncertainty is expanded by a factor $f = 1,25$ and is calculated as:

$$u(x_{PT}) = f \frac{\sigma_{PT}}{\sqrt{n}} \text{ (uncertainty of the characterization)}$$

where:

- σ_{PT} is the robust estimate of the participant standard deviation;
- $\sigma_{PT} = b \cdot x_{PT}$ where b is the relative robust estimate of the participant standard deviation
- n is the number of participants used in calculating the robust assigned values.

The satisfactory range is calculated from the expanded ($k=2$) standard deviation of the proficiency assessment:

The satisfactory range equals $x_{PT} \pm 2 \sigma_{PT}$.